

PMU Private Training Catalog



Power Management University
pmutraining.com

PMU
TRAINING CENTER

Table of Contents

PMU Private Training

About PMU	3
What is PMU Private Training?	4
Standard Private Training Topics (PME)	5
Basic Operator	6
Advanced Operator	7
Designer Application	8
Standard Private Training Topics (EPO)	9
Basic Operator	10
Advanced Operator	11
EPO & Advanced Reports	12
Standard Private Training Topics (Hardware)	13
Operation & Maintenance	14
Installation & Troubleshooting Workshop	15
Standard vs Custom Training	16
Planning a PMU Private Training	18
Requesting a Quote	19



Power Management University (PMU)

About us

PMU is the US based education team dedicated to providing best-in-class training on the various Electrical Power Monitoring System (EPMS) software and related products Schneider Electric has to offer.



Our Students

PMU offers courses that benefit end users, partners and even service roles within the energy segment, such as Energy Managers, Facility Technicians, Site Engineers and Utility Workers.

Our Specialty

PMU offers training on the following EPMS software and hardware:

EPMS Software:

- EcoStruxure™ Power Monitoring Expert (PME)
- EcoStruxure™ Power Operation (EPO)
- PowerLogic™ ION Setup Software

PowerLogic™ and ION Meters

- ION9000 • PM8000 • PM800 • EM4900
- ION8650 • PM5000 • CM4000 • EM4200
- ION7400 • PM3000 • HDPM6000 • EM3500

Communication Devices:

- EcoStruxure™ Panel Server • Com'X
- EcoStruxure™ Site Server • EGX
- Enerlin'X



Private PMU Training Overview

Private PMU Training offers flexible, instructor-led sessions designed to meet your EPMS learning needs.

With both in-person and virtual options, these events are ideal for newly commissioned, upgraded, or staffed sites with multiple employees requiring training. They are also a great fit for geographically dispersed teams needing consolidated instruction or organizations with training budgets but limited travel funds.



Learning Approach:

Students receive instructor-led demonstrations using their live EPMS system. For custom events, a dedicated training environment and additional hands-on labs can be provided, if none of the standard events match with your training expectations.

Training Options:

Standard Private Events provide structured, instructor-led sessions with predefined agendas for 1–4 days, ensuring consistent coverage of core and advanced functionality. Explore all the options in the next couple of pages for detailed information.

For topics or training not included in **Standard Private Events**, we offer **Custom Private Events** for a fully tailored experience.

Standard Private Training Topics

Power Monitoring Expert (PME)

Description:

The following page identifies the various topics that can be covered as part of a Private PMU Training event for a customer with a Power Monitoring Expert (PME) system..

Types of Training:

Here are training groupings designed to fit within a single day. Minor adjustments to these agendas can be made as needed. Please review the additional modules for optional content that can be incorporated.

Basic Operator

Learn to navigate PME applications, configure dashboards and trends, generate reports, manage alarms, and work with device diagrams in this one-day course.

Advanced Operator

Develop advanced PME skills including engineering client setup, device integration, user diagram management, and database maintenance in this one-day course.

Designer Application

Master advanced PME configuration with ION Designer, including creating and restoring meter templates and building programs for metering, logging, alarming, and custom calculations in this one-day course.

Below are additional module options that can be incorporated into your training. For any content outside of these modules, a custom solution will be required. Please contact pmu@se.com for assistance.

Additional Modules

- Energy Billing Module & TOU Editor
- Event Notification Module
- Data Exchange Module
- Energy Analysis Dashboards
- Energy Analysis Reports Module
- Power Quality Performance Module
- Backup Power Module
- Breaker Performance Module
- Capacity Management Module
- Insulation Monitoring Module
- Power Fundamentals
- Build programs to read Modbus registers from one device to an ION meter
- Program process and control applications inside of an ION meter
- Create & Manage Virtual Meters
- Diagnostics Viewer
- Disturbance Direction Detection
- Manual Data Editor

Explore each class in this catalog for detailed agendas and included resources. Topics on hardware can also be included into these topics, explore the hardware training topics for more information.

Question?
Email pmu@se.com

Power Monitoring Expert (PME)

Basic Operator

Description:

This one-day, instructor-led course introduces Power Monitoring Expert (PME) for system operators or general users. Participants will learn to navigate web applications, configure dashboards and trends, generate reports, manage alarms, and work with device and user diagrams. The class can also cover any of the additional modules from the main page or any specific hardware overviews detailed in the hardware section of this brochure.



Course Details:

Duration: 1 Day (8 Hours)

Delivery Type (Either):

- On Customer Site
- Virtually

Agenda Details:

- PME Introduction
- Web Application Introductions
- Dashboards & Trends Configuration
- Generating & Managing Reports
- Alarm Analysis
- Device and User Diagrams
- Adding and Managing System Users & Native Devices

Audience:

- General Operators
- System Engineers
- Facility Personnel

Prerequisites:

- Access to the customer site system. Otherwise, a demo environment will be used
- Basic computer skills and experience with Microsoft Windows
- Basic understanding of power and energy

Students will be provided:

- Digital copies of appropriate user manuals and course materials
- Reference links to help guides and manuals

What is not included:

- Printed material of any kind
- Tailored custom labs or topics for specific site
- Hands on hardware

Note: This training can be combined with other standard private courses to create multi-day sessions. For example, pairing the Basic Operator and Advanced Operator classes results in a two-day program.

Question?
Email pmu@se.com

Power Monitoring Expert (PME)

Advanced Operator

Description:

This one-day, instructor-led course is designed for experienced operators seeking advanced skills in Power Monitoring Expert (PME). Topics include engineering client introduction, management console configuration, logical device setup and third-party integration, device hierarchies, and managing user diagrams with Vista or TGML. The class can also cover any of the additional modules from the main page or any specific hardware overviews detailed in the hardware section of this brochure.



Course Details:

Duration: 1 Day (8 Hours)

Delivery Type (Either):

- On Customer Site
- Virtually

Agenda Details:

- Introduction to Engineering Clients
- Management Console
- Adding Logical Devices & 3rd Party Device Integration
- Device Hierarchies
- Managing User Diagrams using Vista or TGML
- Database Structure, System Troubleshooting & Disaster Recovery

Audience:

- Advanced Operators
- System Engineers
- Facility Personnel

Prerequisites:

- Access to the customer site system. Otherwise, a demo environment will be used
- Basic computer skills and experience with Microsoft Windows
- Basic understanding of power and energy

Students will be provided:

- Digital copies of appropriate user manuals and course materials
- Reference links to help guides and manuals

What is not included:

- Printed material of any kind
- Tailored custom labs or topics for specific site
- Hands on hardware

Note: This training can be combined with other standard private courses to create multi-day sessions. For example, pairing the Basic Operator and Advanced Operator classes results in a two-day program.

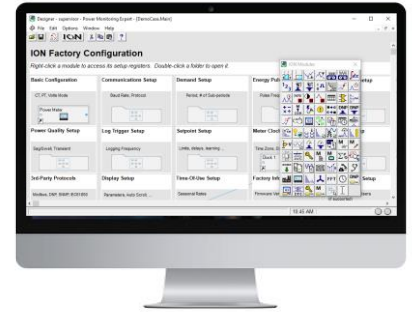
Question?
Email pmu@se.com

Power Monitoring Expert (PME)

Designer Application

Description:

This one-day, instructor-led course focuses on advanced configuration using PME Designer. Participants will review ION architecture, module properties, and the ION Reference document. The class covers creating, backing up, and restoring meter templates, as well as building programs for I/O metering, logging, alarming, and custom calculations



Course Details:

Duration: 1 Day (8 Hours)

Delivery Type (Either):

- On Customer Site
- Virtually

Agenda Details:

- Review ION Architecture, ION Module properties & the ION Reference Document
- Create, Back-up & Restore Meter Templates
- Build programs for input (I/O) metering
- Build programs for logging
- Build programs for alarming
- Build programs for custom calculations

Audience:

- Advanced Operators
- System Engineers
- Facility Personnel

Prerequisites:

- Access to the customer site system. Otherwise, a demo environment will be used
- Basic computer skills and experience with Microsoft Windows
- Basic understanding of power and energy

Students will be provided:

- Digital copies of appropriate user manuals and course materials
- Reference links to help guides and manuals

What is not included:

- Printed material of any kind
- Tailored custom labs or topics for specific site
- Hands on hardware

Note: This training can be combined with other standard private courses to create multi-day sessions. For example, pairing the Designer Application and Advanced Operator classes results in a two-day program.

Question?
Email pmu@se.com

Standard Private Training Topics

EcoStruxure Power Operation (EPO)

Description:

The following page identifies the various topics that can be covered as part of a Private PMU Training event for a customer with an EcoStruxure Power Operation (EPO) system.

Types of Training:

Here are training groupings designed to fit within a single day. Minor adjustments to these agendas can be made as needed. Please review the additional modules for optional content that can be incorporated.

Basic Operator

Learn to navigate the EPO system, access real-time data, manage alarms, and review system architecture in this one-day introductory course.

Advanced Operator

Gain advanced skills in EPO, including managing users and roles, restoring projects, adding devices, and creating diagrams with graphics editors in this one-day course.

EPO & Advanced Reports

Learn to manage alarms, dashboards, trends, and create advanced reports, plus perform database maintenance and device management in this one-day course.

Below are additional module options that can be incorporated into your training. For any content outside of these modules, a custom solution will be required. Please contact pmu@se.com for assistance.

Additional Modules

- Integrate IEC61850 Devices in EPO
- Integrate BACnet Devices in EPO
- Integrate SNMP Devices in EPO
- Integrate OPC-DA Sources in EPO
- Troubleshoot Communication Failures
- Troubleshoot Block Read Errors
- Create a One-Line Genie in Graphics Builder
- Create a One-Line Component in Graphics Editor
- Learn the Basics of Cicode
- Generate Summary Alarms in Cicode
- Advanced TGML Graphics with JavaScript
- Power Fundamentals

Explore each class in this catalog for detailed agendas and included resources. Topics on hardware can also be included into these topics, explore the hardware training topics for more information.

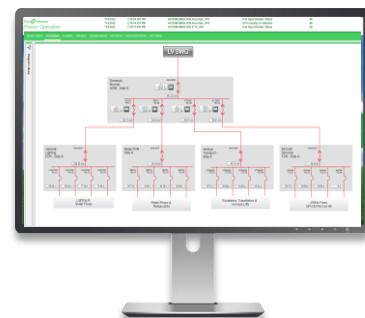
Question?
Email pmu@se.com

EcoStruxure Power Operation (EPO)

Basic Operator

Description:

This one-day, instructor-led course introduces operators to EcoStruxure Power Operation (EPO). Participants will review system architecture, learn to navigate the web application, access real-time data and one-line diagrams, and manage alarms. The class can also cover any of the additional modules from the main page or any specific hardware overviews detailed in the hardware section of this brochure.



Course Details:

Duration: 1 Day (8 Hours)

Delivery Type (Either):

- On Customer Site
- Virtually

Agenda Details:

- Review System Architecture
- Introduction to the Web Application
- Navigate Real-Time Data and One-Line Diagrams
- View and Manage Alarms
- View and Manage Trends and Basic Reports

Audience:

- General Operators
- System Engineers
- Facility Personnel

Prerequisites:

- Access to the customer site system. Otherwise, a demo environment will be used
- Basic computer skills and experience with Microsoft Windows
- Basic understanding of power and energy

Students will be provided:

- Digital copies of appropriate user manuals and course materials
- Reference links to help guides and manuals

What is not included:

- Printed material of any kind
- Tailored custom labs or topics for specific site
- Hands on hardware

Note: This training can be combined with other standard private courses to create multi-day sessions. For example, pairing the Basic Operator and Advanced Operator classes results in a two-day program.

Question?
Email pmu@se.com

EcoStruxure Power Operation (EPO)

Advanced Operator

Description:

This one-day, instructor-led course provides advanced training in EcoStruxure Power Operation (EPO). Participants will learn to back up and restore projects and data, manage users and roles, and add devices using the I/O Device Manager. The class also covers creating and managing diagrams with Legacy Graphics Builder or TGML Graphics Editor, as well as modifying one-line diagrams.



Course Details:

Duration: 1 Day (8 Hours)

Delivery Type (Either):

- On Customer Site
- Virtually

Agenda Details:

- Backup and Restore Projects and Data
- Manage EPO Users and Roles
- Add and Manage Devices via the I/O Device Manager
- Create and Manage Diagrams using Legacy Graphics Builder or TGML Graphics Editor
- Modify One-Line Diagrams

Audience:

- Advanced Operators
- System Engineers
- Facility Personnel

Prerequisites:

- Access to the customer site system. Otherwise, a demo environment will be used
- Basic computer skills and experience with Microsoft Windows
- Basic understanding of power and energy

Students will be provided:

- Digital copies of appropriate user manuals and course materials
- Reference links to help guides and manuals

What is not included:

- Printed material of any kind
- Tailored custom labs or topics for specific site
- Hands on hardware

Note: This training can be combined with other standard private courses to create multi-day sessions. For example, pairing the Basic Operator and Advanced Operator classes results in a two-day program.

Question?
Email pmu@se.com

EcoStruxure Power Operation (EPO)

EPO & Advanced Reports

Description:

This one-day, instructor-led course provides training in EcoStruxure Power Operation (EPO) and Advanced Reporting. Participants will learn to navigate real-time data and one-line diagrams, manage alarms, dashboards, and trends, and create advanced reports. The class also covers database structure, maintenance tasks, and adding devices through the Management Console and Device Manager.



Course Details:

Duration: 1 Day (8 Hours)

Delivery Type (Either):

- On Customer Site
- Virtually

Agenda Details:

- Real-Time Data & One-Line Diagrams
- View and Manage Alarms
- Manage Dashboards and Trends
- Create and manage Advanced Reports
- Review Database Structures and Maintenance Tasks
- Add and Manage Devices via the Management Console & Device Manager

Audience:

- General Operators
- System Engineers
- Facility Personnel

Prerequisites:

- Access to the customer site system. Otherwise, a demo environment will be used
- Basic computer skills and experience with Microsoft Windows
- Basic understanding of power and energy

Students will be provided:

- Digital copies of appropriate user manuals and course materials
- Reference links to help guides and manuals

What is not included:

- Printed material of any kind
- Tailored custom labs or topics for specific site
- Hands on hardware

Note: This training is for systems that have EPO & Advanced Reports but only have one day of training quoted. If multiple days have been selected, then a combination of other classes might be a better fit.

Question?
Email pmu@se.com

Standard Private Training Topics

PowerLogic™ & ION Metering Hardware

Description:

The following page identifies the various topics that can be covered as part of a Private PMU Training event for a customer with any of the below Schneider hardware.

Type of Training:

Here are training groupings designed to fit within a single day. Minor adjustments to these agendas can be made as needed. Please review the additional modules for optional content that can be incorporated.

Operation & Maintenance

Learn best practices for hardware operation and maintenance, including system navigation, communication methods, and troubleshooting techniques in this one-day course.

Installation & Troubleshooting Workshop

Gain hands-on experience with hardware installation, configuration, and troubleshooting of ION and PowerLogic meters in this two-day workshop.

Explore each class in this catalog for detailed agendas and included resources. These hardware topics can also be included into the PME or EPO topics, explore the hardware training topics for more information.

Question?
Email pmu@se.com

PowerLogic™ & ION Metering Hardware

Operation & Maintenance

Description:

This one-day, instructor-led course provides a comprehensive overview of hardware operation and maintenance on Schneider equipment. Delivered through presentation, the training covers essential concepts such as system navigation, communication methods, and troubleshooting best practices. Participants will gain practical insights into maintaining reliable hardware performance and resolving common issues effectively. No physical hardware will be provided; however, demonstrations can be performed using equipment already onsite.

Course Details:

Duration: 1 Day (8 Hours)

Delivery Type (Either):

- On Customer Site
- Virtually

Agenda Details:

- Overview of the hardware
- Front Panel / Web Page Navigation
- Meter Communications
- CT/PT Wiring & Troubleshooting
- Communications Wiring & Troubleshooting

What is not included:

- Physical hardware
- Hands on labs
- Printed material of any kind

Supported Hardware:

Below is a list of devices that can be covered in the session.

PowerLogic and ION Meters

- | | | | |
|-----------|----------|------------|----------|
| • ION9000 | • PM8000 | • PM800 | • EM4900 |
| • ION8650 | • PM5000 | • CM4000 | • EM4200 |
| • ION7400 | • PM3000 | • HDPM6000 | • EM3500 |

Communication Devices:

- | | | |
|-----------------------------|-------------|-------|
| • EcoStruxure™ Panel Server | • Enerlin'X | • EGX |
| • EcoStruxure™ Site Server | • Com'X | |

Prerequisites:

- Metering equipment has been successfully commissioned and accessible from the training location (either physically or via a network connection)
- Basic computer skills and experience with Microsoft Windows
- Basic understanding of power and energy

Students will be provided:

- Digital copies of appropriate user manuals and course materials
- Reference links to help guides and manuals

Question?
Email pmu@se.com

PowerLogic™ & ION Metering Hardware

Installation & Maintenance Workshop

Description:

This two-day, instructor-led workshop provides in-depth training on the operation, maintenance, and troubleshooting of ION and PowerLogic meters. Participants will learn essential skills including front panel navigation, meter communications, and configuration using ION Setup with real metering hardware. A limit of 10 people for this class due to the number of devices within the hardware kit.



Course Details:

Duration: 2 Days (16 Hours)

Delivery: On Customer Site

Capacity Limit: 10 People

Agenda Details:

Day 1:

- Introduction to ION and PowerLogic Meters
- Front Panel Navigational Labs
- Meter Communications

Day 2:

- ION Setup Labs
- CT/PT Wiring & Troubleshooting
- Communications Wiring & Troubleshooting Labs

Hardware Kit:

The hardware kit used during class includes:

- 5x Gateways
- 5x ION meters
- 5x PowerLogic meters

Prerequisites:

- Local laptops provided by customer with recent ION Setup Installed
- Basic computer skills and experience with Microsoft Windows
- Basic understanding of power and energy

Students will be provided:

- Digital copies of appropriate user manuals and course materials
- Reference links to help guides and manuals
- Access to demo hardware during labs

What is not included:

- Printed material of any kind

Note: This training is modeled after the Hardware Installation and Troubleshooting Factory course. For those interested in attending the Factory class at the Franklin Hub instead of a private event, please refer to Factory Catalog at pmutraining.com for details.

Question?
Email pmu@se.com

Standard vs Custom Training

Unsure if you need a Custom Private Event? Explore these for guidance.

STANDARD

- ✓ Fixed Days (1-4)
- ✓ Predefined Content
- ✓ Flat Rate Price
- ✓ General Audience
- ✗ Printed Material
- ✗ Customization

CUSTOM

- ✓ Flexible Days
- ✓ Fully Tailored Content
- ✓ Price Varies by Scope
- ✓ Specific Audience
- ✓ Hands On Labs
- ✓ Customization

How to Choose:

When choosing between **Standard** and **Custom** private training, consider the following:

- Will the event require printed material, demo hardware, or simulated training environments for each student for hands-on lab exercises?
- Will the event require more than 1 instructor?
- Will the event be hosted outside of US standard business hours, or exceed 4 consecutive days?
- For onsite events, will it be outside of the continental US?
- Will the event need to cover topics beyond our pre-defined content requiring custom content development time?

If you answered “yes” to any of these questions, a **Custom Training** event might be the best fit. Contact pmu@se.com to get a quote started.

Standard vs Custom Training

Explore these examples of custom events for guidance.

Examples of Custom Training:

- **Advanced Designer for ION Meters**
In-depth training to create custom templates for your specific site using Designer for ION meters.
- **Private Factory Courses**
Convert standard PMU factory courses into private sessions with interactive labs and activities. (Refer to the Factory PMU Training Catalog for details.)
- **Tailored Topics**
Select specific subjects not covered in standard training days or customize your agenda. (See the Private Training Topics page in this catalog for more information.)
- **Specific Printed Material**
Need printed material, presentation, or activities customized for your specific site and its unique requirements.



Planning a Private PMU Training

Planning a **Private PMU Training** event is easy!



Step 1: Choose Your Type of Training

Select one or multiple courses to customize the number of training days.

PME

Basic Operator

Advanced
Operator

Designer
Application

EPO

Basic Operator

Advanced
Operator

EPO & Advanced
Reports

Hardware

Operation &
Maintenance

Installation &
Troubleshooting
Workshop

Detailed overviews are provided earlier in this brochure. For any training outside these standard offerings, please contact pmu@se.com to arrange a custom event..

Step 2: Add-On Services (Optional)

- ☐ **Videography Services** – Required if a recorded copy of the training event is needed.
- ☐ **Second Instructor** – May be required depending on class size or content requests.



Step 3: Confirm & Schedule

Once you've selected your training type and finalized your agenda, we'll help you lock in dates and delivery details.

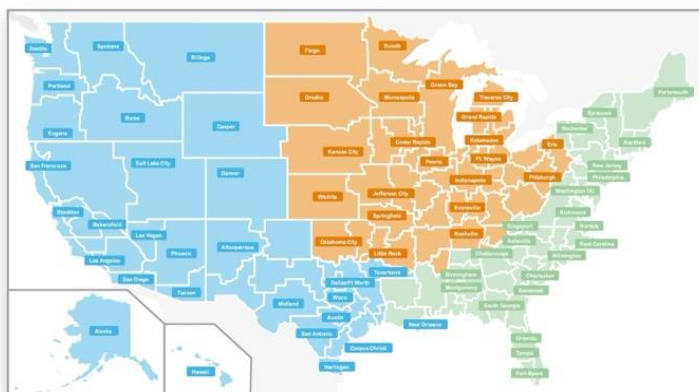
Requesting a Quote for Private PMU Training

Contact the appropriate Digital Services sales team to get a formal quote using the referenced part numbers.

East Team: DSEast@se.com

Central Team: DSCentral@se.com

West Team: DSWest@se.com



Onsite Events

SE Part Number	Description
3000PMUSITE1C	1Day Onsite Training Event, up to 10ppl, Standard Content
3000PMUSITE2C	1Day Onsite Training Event, up to 10ppl, Standard Content
3000PMUSITE3C	1Day Onsite Training Event, up to 10ppl, Standard Content
3000PMUSITE4C	1Day Onsite Training Event, up to 10ppl, Standard Content
3000PMUCSITEVID	Daily Videography Service Adder for Onsite Training Events, qty as needed

Virtual Events

SE Part Number	Description
3000PMUCDVILT1DAY	1Day Virtual Private Training Event, up to 10ppl, 5X8, Standard Content
3000PMUCDVILT2DAY	2Day Virtual Private Training Event, up to 10ppl, 5X8, Standard Content
3000PMUCDVILT3DAY	3Day Virtual Private Training Event, up to 10ppl, 5X8, Standard Content
3000PMUCDVILT4DAY	4Day Virtual Private Training Event, up to 10ppl, 5X8, Standard Content
3000PMUCVILTVID	Daily Videography Service Adder for Private VILT Events, qty as needed

Custom Event

SE Part Number	Description
3000PMUCUSTMPRVT	Custom PMU Private Training Event



PMU
TRAINING CENTER